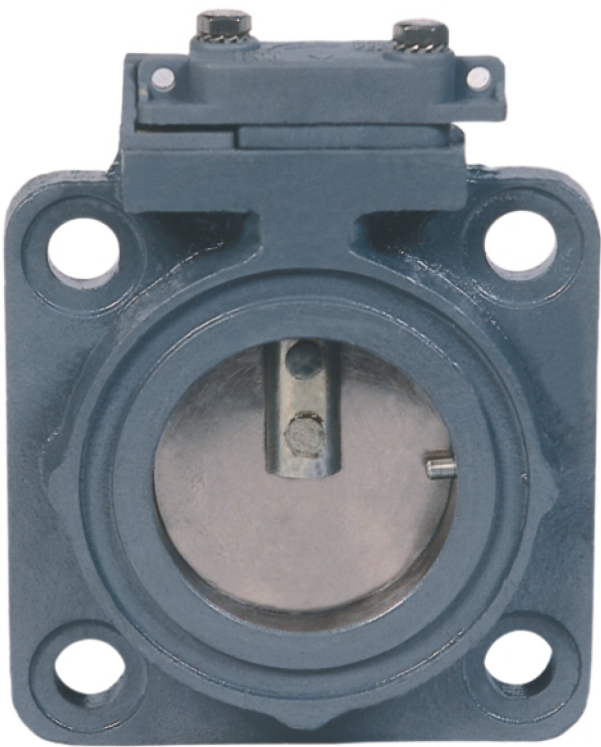


THROTTLE VALVE FOR TRANSFORMER RADIATORS

Bore 78 mm (3")



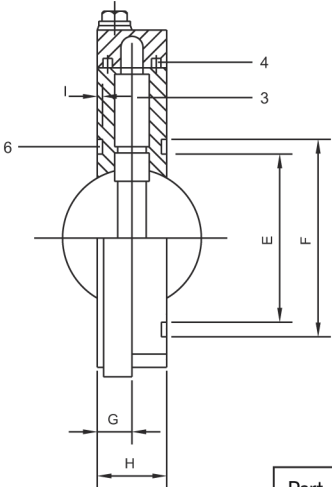
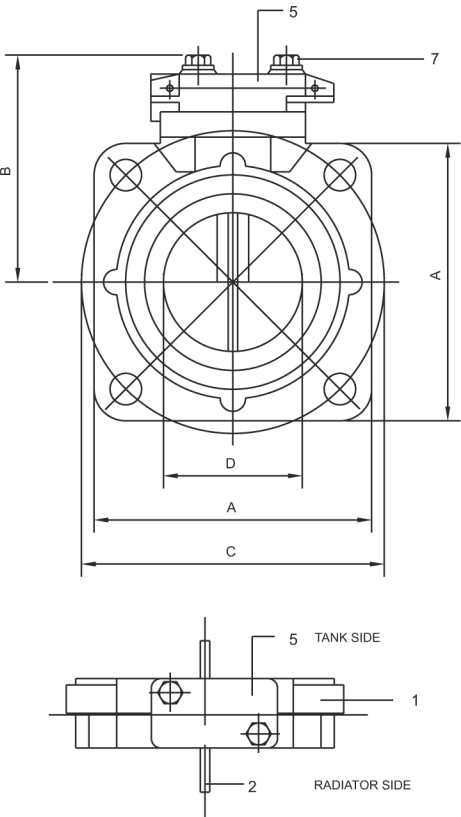
With Plain Flange
Type RV080

FEATURES

- Maximum allowable leakage through flap less than 20 cc/minute with kerosene at a head of 3 meters. DIN 42560 specifies allowable leakage of 100cc/minute.
- Forged Steel body.
- Aluminium flap.
- 100% pressure testing for leakage through flap.
- Strong and sturdy construction for maintenance free service.
- Metal to metal contact between flap and body (no ‘O’ ring).
- Locking possible at both open and shut position.
- Complete surface protection.
- Locking cap of aluminium instead of plastic.



Type RV080 Drawing



Part No.	Quantity	Description	Material Specification
1	1	Flange	Steel
2	1	Flap	Aluminium
3	1	Spindle	Mild Steel
4	1	Washer Rubber	Nitrile Butadiene
5	1	Locking Cap	Aluminium
6	2	Bolt	Stainless Steel

DESCRIPTION

The Valve mainly consists of a machined flange, flap, spindle and locking cap. The flap is machined to fit the bore. The spindle is riveted to the flap and can be rotated in either directions to operate the valve. The cap on top of spindle locks the valve in the open or closed position, which is indicated on the exposed plate marked open/shut.

OPERATION

To operate the valve, loosen bolts and remove locking cap. Rotate the spindle in the direction indicated on the cap, to open or close the flap. Place the cap back in position (the cap will fit only in one position corresponding to the flap position) and tighten bolts

TYPE	BORE D	A	B	C	E	F	G	H	I
RV080	78	150	122	160	98	115	19	35	3